

Democratic and Popular Republic of Algeria

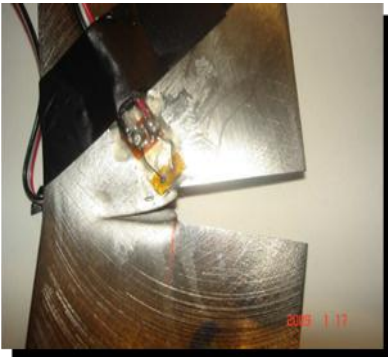
Ministry of Higher Education
and Scientific Research

Hassiba Benbouali University of Chlef



Laboratory for Theoretical Physics and Material Physics
LTPM

Second Call for Communications



First International Workshop on
Fracture Mechanics

FRACT'1

13-14 November 2011 Chlef, Algeria.



Chlef (El-Asnam) 1913



جامعة سطيف



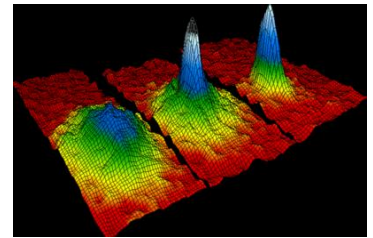
AIRLAB

Équipement Médical et de laboratoire

BT. 406 C Ain Allah, Dely Brahim - Alger

ONOU Université de Chlef, Algérie

The Laboratory for Theoretical Physics and Material Physics (**LPTPM**) in collaboration with Hassiba Benbouali University of Chlef, intends to organize the first edition of the International Workshop on Fracture Mechanics (**FRACT'1**), which will be held at Hassiba Benbouali University of Chlef, Algeria from 13 to 14 November 2011.



Aims

Fracture mechanics is applied in industry when a potential breakdown of a component may have disastrous consequences (human casualties, ecologic damages, ...). It is indeed the case in aeronautic or railway transports, energy (and in particular nuclear energy) production, manufacturing industries....

The risk of fracture in these areas is highly unacceptable. One has to suppose a priori that a defect may exist even if it is improbable, and try to predict under what conditions this defect cannot be a source of catastrophic fractures.

The workshop essentially focuses on the integrity (reliability, lifetime and security) of the structures with different geometries, dimensions and constitutions with the aims of presenting and using modern techniques of dimensioning in presence of cracks according to the considered modes.



Topics:

1. Stress and strain analysis

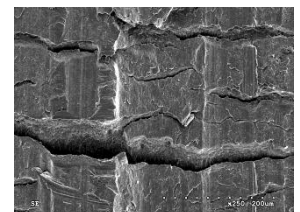
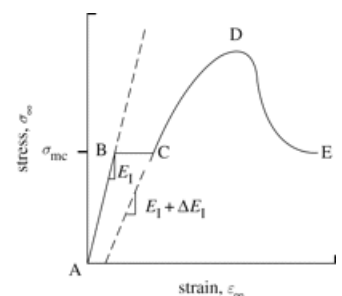
- experimental methods
- numerical analysis

2. Materials and structure

- metallic materials, titanium alloys
- plastics and composites
- biomaterials and nano-materials
- failure assessment, reliability and safety factors
- environmental effect and hydrogen embrittlement
- welded joints behaviour

3. Defects assessment

- at macro, meso, micro and nano scales
- size and location determination
- non destructive testing



Important dates

Authors are requested to electronically submit one page abstract of the paper by **15 May 2011** following instructions on website. Only electronic submissions will be accepted: please do not fax, do not send duplicate submissions. All files must be sent to fract1_univ_chlef@yahoo.fr. File dimension should not exceed 6 MB. Final manuscripts are due by **October, 15, 2011**.

English is the official languages of the Conference.

Registration

Full registration includes : two days Conference, tourist tour (14 November), coffee breaks lunches (13,14 November) social dinner (14 November) and congress kit and proceedings.

Algerians Participants : 6000 DA
Others Participants : 250 euros
Student : 3000 DA
Industrial participants : 15000 DA

Honorary Presidents

Pr. M. Bessedik, Rector of the University of Chlef.
Pr. B. Belmadani, Vice-Rector of the University of Chlef.
Mr. F. Fekaoui, Vice-Rector of the University of Chlef.

President of the Workshop

Pr. M. Benarous, Head of LPTPM
Dr. M. Hadj Meliani, LPTPM, UHBChef, Algeria

Scientific Committee

President

Pr. M. Benarous, LPTPM, UHBChef, Algeria

Members

Pr. T. Boukharrouba	USTHB, Algiers	Algeria
Pr. L. Loukarfi	UHBC, Chlef	Algeria
Pr. N. Ouali	USTHB, Algiers	Algeria
Pr. Z. Azari	Enim, Metz	France
Pr. G. Pluvinage	Enim, Metz	France
Pr. K. Chaoui	University of Annaba	Algeria
Pr. K. Azouaoui	USTHB, Algiers	Algeria
Pr. Y. Matvienko	Moscow Institute	Russia
Pr. A. Elhoud	Aberdeen University	Scotland, UK
Pr. T. Tamine	USTOra	Algeria
Pr. N. Ali-Benyahia	USTHB, Algiers	Algeria
Pr. B. Ait saadi	USTOra	Algeria
Pr. M. Lounis	USTOra	Algeria

Organization Committee

President

Dr. M. Hadj Meliani, President

Members

Dr. H. Khalfoun, LPTPM, Chlef University
Mr. F. Fekaoui, UHBChef, Chlef University
Mr. M. Sadou, LPTPM, Chlef University
Ms. S. Bourahla, LPTPM, Chlef University
Dr. A. Hocine, Dpt Mechanics, UHBChef, Chlef University

Dr. A. ELazzizi Dpt. Mechanics, USTO Oran.
Mr. M. Kandoussi, UHBChlef. Chlef University
M. A. Belalia, UHBChlef. Chlef University
Dr. A. Ali-benamara, LPTPM, Chlef University
Dr. K.EIMiloudi, LPTPM, Chlef University
Ms. M. Ouagued, LPTPM, Chlef University
Dr. A. Benarous, Dpt. Mechanics, UHBChlef, Chlef University
Dr. A. Khelil, Dpt. Mechanics, UHBChlef, Chlef University
Mr. Omsalama, , UHBChlef, Chlef University
Mr.A. Kadoune, Assitant UHBChlef, Chlef University
Mr. M. Kandoussi, , UHBChlef, Chlef University

Contacts

<http://www.univ-chlef.dz/LPTPM/contact.html>

lptpm@univ-chlef.dz

fractl_univ_chlef@yahoo.fr

Tel. +213 277 217 94

Mob. +213 792 120 567